

TECHNICAL SPECIFICATION



Main Hall
Petit Théâtre
Méridienne
Rehearsal Room
Dance Studio

TECHNICAL TEAM

TECHNICAL DIRECTOR

Jean-Michel Le Lez +33 2 98 33 95 51 jean-michel.le-lez@lequartz.com

TECHNICAL ASSISTANT

Vinvella Lecocq +33 2 98 33 95 52 invella.lecocq@lequartz.com

TECHNICAL MANAGER

Frédéric Roudaut +33 6 09 07 30 20 frederic.roudaut@lequartz.com

TECHNICAL MANAGER

Kenan Trevien +33 6 80 18 79 61 kenan.trevien@lequartz.com

TECHNICAL MANAGER

Christophe Le Bris +33 6 09 65 46 77 christophe.le-bris@lequartz.com

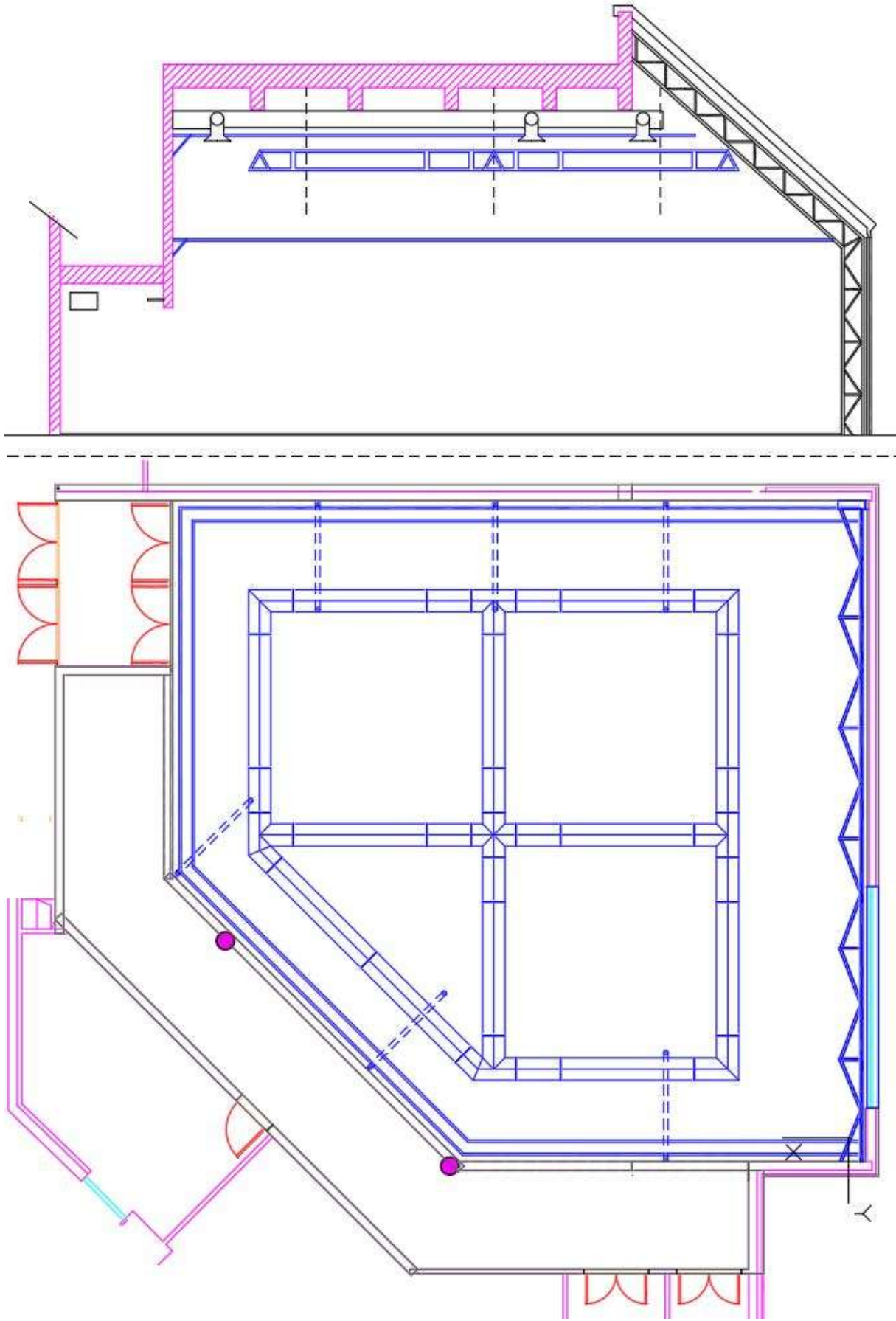
EVENT COORDINATOR

Frédéric Vilchien +33 6 13 34 61 44 frederic.vilchien@lequartz.com

SECURITY CONTROL ROOM +33 2 98 33 95 45

1. Table of contents

TECHNICAL TEAM	1
VENUES.....	4
RECEPTION HOURS.....	4
SAFETY INSTRUCTIONS FOR LE QUARTZ.....	4
ACCESS TO THE THEATER	5
MAIN HALL.....	6
“PETIT THÉÂTRE”	15
LA MÉRIDienne	21
REHEARSAL ROOM	24
EQUIPMENTS.....	28
STAGE	28
LIGHTING	30
SOUND / VIDEO	31



VENUES

RECEPTION HOURS

The entrance for artists and technicians is through the Security Control Room, located opposite the public entrance, on Rue Frédéric Le Guyader (behind the Police Station).

The Security Control Room is open 24/7.

THE USUAL WORKING HOURS ARE :

Morning: 9:00 AM – 12:30 PM

Afternoon: 2:00 PM – 6:30 PM

Evening: 8:00 PM – 11:00 PM

These hours can be adjusted in coordination with the general management, while respecting meal breaks and the 11-hour rest period between workdays.

SAFETY INSTRUCTIONS FOR LE QUARTZ

The entire building is a NO-SMOKING area.

Accident prevention requires the use of regulatory safety equipment provided to the staff. Appropriate PPE (Personal Protective Equipment) will be required in various risk situations (safety shoes, gloves, helmet, harness, fall arrest systems, stabilizers for Genie lifts, etc.).

A representative of the visiting company must submit a completed risk prevention plan upon arrival to be finalized with the hosting manager. The company's stage manager must also have safety certificates for their equipment.

Emergency exits on stage and in the auditorium must always remain clear.

Simultaneous work at two different height levels must be strictly avoided. If unavoidable, the ground area must be cordoned off, and/or helmets or caps must be worn.

Only trained and authorized Quartz technicians are allowed to use the lift platforms. The same applies to the workshop's power tools.

Fly system operations are performed exclusively by Quartz staff.

Metal structures must be grounded.

According to decree no. 2017-1244 of August 7, 2017, regarding the prevention of risks related to noise and amplified sounds, the sound pressure level must not exceed 102 dB (A) as an average level over 15 minutes at any point accessible to the public.

ACCESS TO THE THEATER

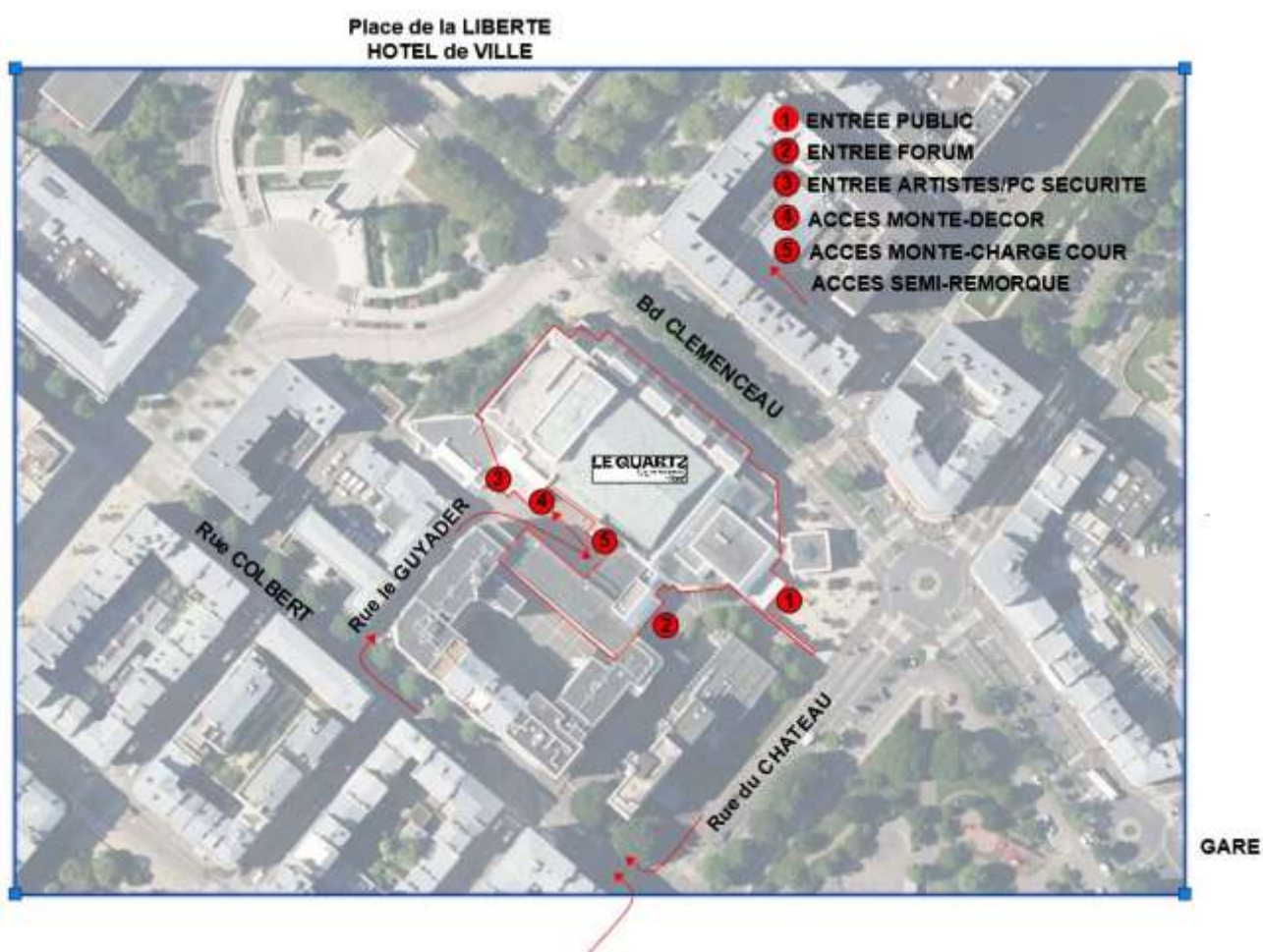
Access for set pieces is through the inner courtyard of Le Quartz via “Rue Frédéric Le Guyader”

This access is challenging, and it is recommended to contact the Quartz technicians or the Security Control Room before proceeding with maneuvers, especially for semi-trailers.

To access the inner courtyard of Le Quartz (especially with semi-trailers), it is strongly advised to follow the route:

- Rue du Château
- Rue Colbert
- Rue Le Guyader

Parking is not allowed in the inner courtyard after unloading and during performances taking place at Le Quartz.



MAIN HALL



DIGITAL FILES AVAILABLE (on demand)

- 2D Plans DWG
- 3D Plans in 2025 Capture Format

CAPACITIES

Public access to the main hall is available at levels 0, 1, and 2.

Several capacities are possible:

Maximum	1468
Hall without the balcony	1180
Half hall	739
Accessible seating (at the bottom and top of the half hall)	20
Proscenium (to be deducted from the previous capacities)	78

A curtain serves as a divider in the half hall configuration, with public access only at level 0. In the case of a control booth in the hall, at least 18 seats must be removed.

LOAD DOCK

Access to the scenery lift is at ground level (level -2), but it can also have intermediate positions at 60, 80, 100, and 120 cm from the ground, depending on the trailer height. Maximum load: 5,000 kg.

External access door (level -2)	Width: 3,88m	Height :4,80m
Access door to the loading dock (level -2)	Width l: 2,44m	Height: 5,75m
Exit door from the loading dock (level -1)	Width: 7,07m	Height: 4,50m
Loading dock surface: Width: 2.60 m, Length: 8.10 m	Width: 2,60m	Height: 8,10m

Only the length facing the exit of the scenery lift can be used to support set elements. The equipment must be securely maintained at a distance from the other three sides.

Please note that beyond 7.30 m in length, there may be difficulties when exiting the loading dock.

CONTROL ROOM POSITIONS

Depending on the determined capacity and the company's preferences, the technical control rooms can occupy several locations:

The Grand Theater control room (31.30 m from the front of the stage).

The upper seating area just in front of the control room, in the auditorium but under the balcony (29.50 m from the front of the stage).

In the middle of the auditorium at the separation of the half hall (20.80 m from the front of the stage).

To allow for the booking of seats by the ticket office, it is essential to confirm the chosen control room positioning option as soon as possible.

Lighting is adjustable by zone using RGBW warm LEDs.

STAGE

The floor of the stage is made of black-stained beech with oil finish.
The maximum load capacity is 650 daN/m².

Preferential treatment will be given to weighting as an alternative to screwing.
It is partially removable over an area of 21 m x 10 m behind the safety curtain.
The height beneath the stage is 3 meters.

STAGE	Forestage > Back of the stage	22,80m
	Front edge > Back of the stage	14,20m
	Proscenium arch > Back of the stage	12,40m
	Front edge of the stage > Proscenium opening	1,30m
	Forestage > safety curtain	5,90m
	Stage height	0,97m
	Width (Wall to Wall)	31,40m

PROSCENIUM ARCH	Maximum proscenium opening	18,00m
	Minimum proscenium opening (adjustable frame)	13,00m
	Height	7,35m
	Front curtain: red, motorized operation	
	Opens in Greek style (24 seconds) or German style	

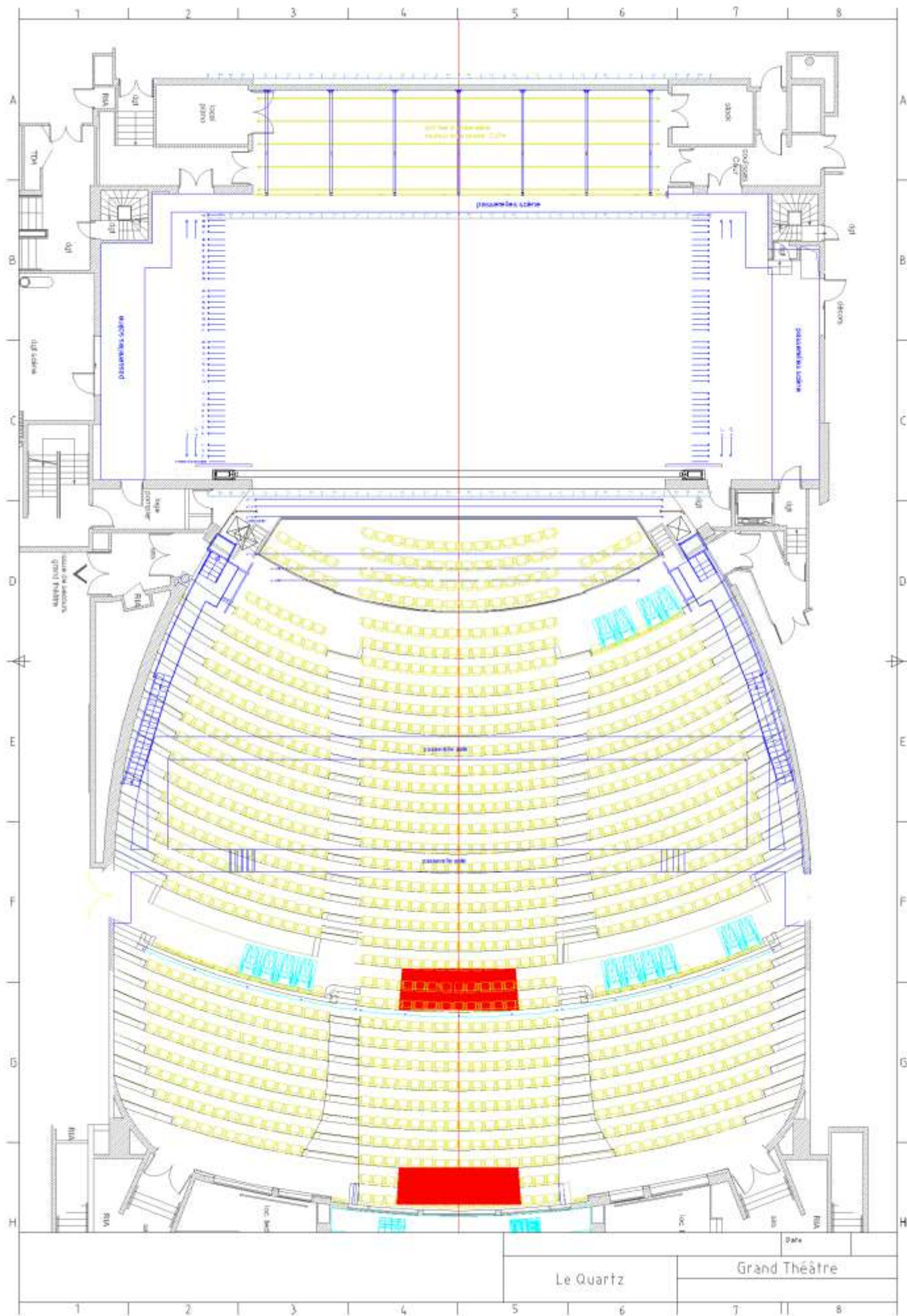
FORESTAGE	Depth	4,15m
	Height	0,97m
	Retractable seats	78

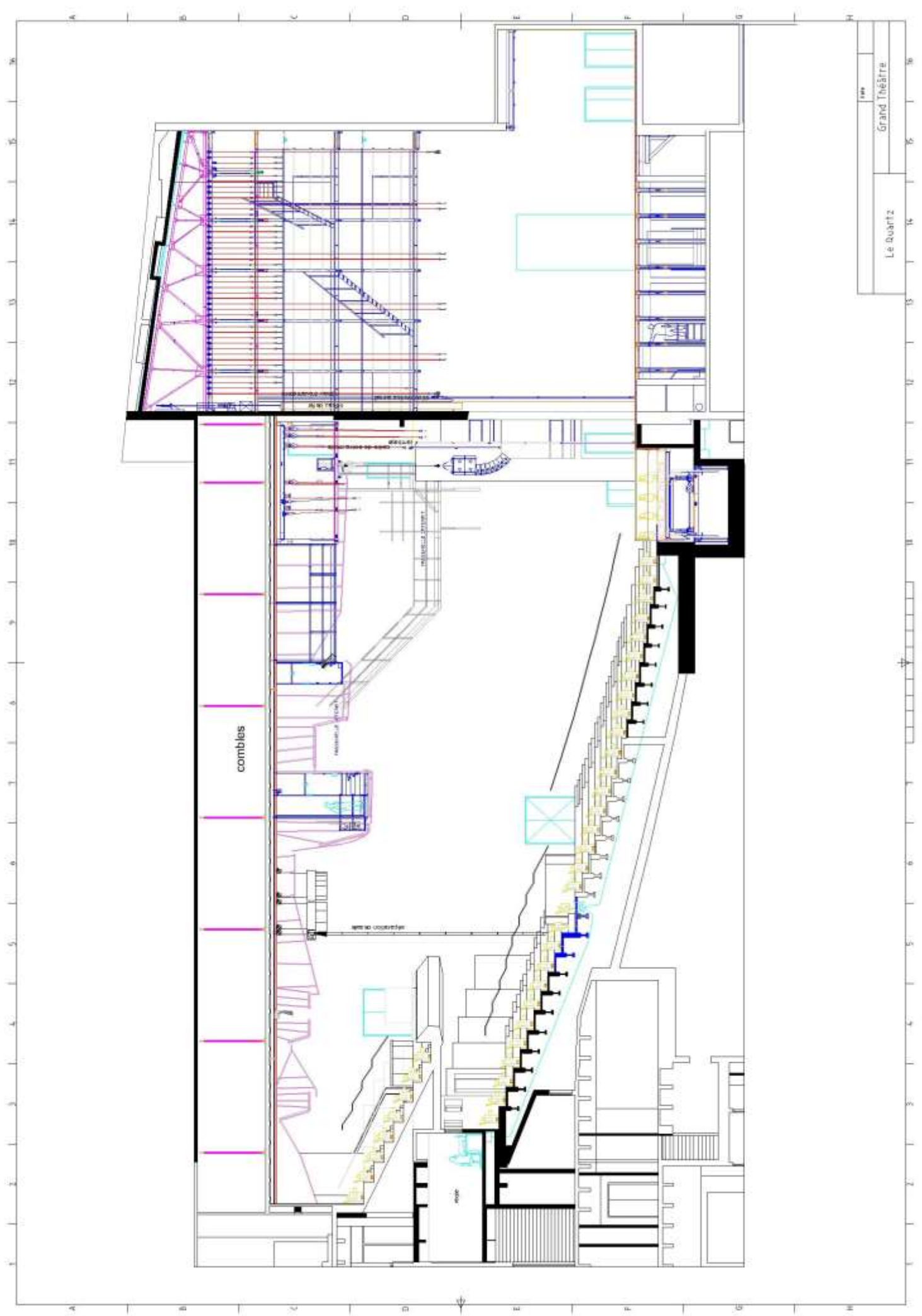
BACKSTAGE	Opening	18,00m
	Depth	5,00m
	Height below grid	5,30m
	Number of pipes (50 mm diameter)	5

SAFETY CURTAIN

The safety curtain must be operable (a test will be conducted before each performance) only if the set elements on stage do not meet the M1 fire classification. Any non-compliant elements must be positioned behind the fire curtain.

The safety curtain can also serve as a backdrop for a performance taking place on the forestage.





Le Quartz

1ère

Grand Théâtre

FLY SYSTEM EQUIPMENT

All battens are motorized with variable speed. The system is controlled via “Easyscene” system (1 wired main console and 1 mobile secondary console). Simultaneous movements are limited to 10 battens. The maximum distributed load per batten is 500 kg.

- 40 battens on the stage, with a maximum speed of 1.6 m/s.
- 4 side battens (2 stage left and 2 stage right), with a maximum speed of 0.4 m/s.
- 5 forestage battens, with a maximum speed of 0.4 m/s.
- Batten 1 is dedicated to the red front curtain.
- Batten AS3 is dedicated to the proscenium frame (lambrequin).
- In addition to the front curtain on Batten 1, another curtain is usually installed on Batten 40.

Stage grid height	16,90m
Forestage grid depth	5,50m
Batten maximum height	16,20m
Spacing between battens in groups of 8	0,25m
Length of battens 1 to 40	22,00m
Length of side battens	10,00m
Length of battens AS5 and AS6	15,20m
Length of battens AS1 to AS4	17,90m
Distance between AS1 and P2	1,90m

DANCE FLOOR

Le Quartz can provide several sets of dance floors, 18.00 m x 15.00 m, laid from front to backstage.

- 1 set of Harlequin Studio, black, 3 mm thick, reserved for classical dance performances.
- 1 set of Harlequin black 1.5 mm thick.
- 1 set of Harlequin black 1.5 mm thick.

STAGE DRAPES

	width	Height	number
Borders	22,00m	4,00m	7
	20,00m	3,50m	3
Legs	6,50m	9,00m	14
	12,00m	9,00m	4
	4,20m	9,00m	4
	2,70m	9,00m	4
Cyclorama White	16,00m	9,00m	1
Black Gauze			
Root mesh	22,00m	9,00m	1
Cinema Screen	16	9,00m	1

DRESSING ROOMS

Level -1 (Main Stage)	Dressing rooms with showers	4
	Dressing rooms without showers	2
	Tour Office	1
	"Makeup" dressing room	1
Level 1	Collective dressing rooms with showers	3

LIGHTING EQUIPMENT

The lighting control position, like the sound and video, can be set up either in the control booth, at the back of the auditorium, or in the middle of the auditorium as described earlier.

The auditorium lighting is dimmable by zone and uses RGBWW LED technology.

The main hall is equipped with ETC Sensor 3 dimmers:

- 236 circuits of 3 kW
- 2 circuits of 5 kW
- DMX is distributed via sACN through a network of Luminex nodes and switches.
- The lighting console dedicated to the main hall is an APEX 5 – EOS or GrandMa 2 Light
-

In addition to the 40 battens on the main stage and the 2 side battens, lighting fixtures can also be hung on the lateral catwalk rails.

In the auditorium, hanging points are available on:

- 5 proscenium battens (one batten is dedicated to the proscenium frame)
- Side catwalks, stage left and stage right: approximately 10.50 m above the stage
- Catwalk 1: 14.20 m above the stage, 17.20 m from the front of the stage, with an angle of about 56°
- Catwalk 2: 13.20 m above the stage, 19.60 m from the front of the stage, with an angle of about 42°
- The followspot positions are in the control room sides, and center on catwalk 2.



SOUND / VIDEO EQUIPMENT:

The sound control position, like the lighting and video, can be set up either in the control booth, at the back of the auditorium, or in the middle of the auditorium as described earlier.

The equipment dedicated to the main hall includes a d&b audiotechnik line array system, installed as follows:

- Two clusters of two XSLi-Sub + four XSLi8 + four XSLi12 hung stage left and stage right.
- Three clusters of three Ti10L speakers hung as delay lines on the catwalks stage left, center and stage right.
- Two Yi10P speakers used as InFill stage left and stage right.
- Eight 44S d&b audiotechnik speakers placed at the front of the stage.
- Ten 12S-D Surround speakers hung around the auditorium.
- Two SL-GSub d&b subwoofers placed on the floor stage left and stage right.
- A central cluster of seven Amadeus Diva M speakers + two Diva Subs completes the system.

The main hall is equipped with a freespeak ii intercom system with 15 stations and video monitoring in the backstage areas (stage left and right) and in the hallways (levels -1 and +1) near the dressing rooms.





“PETIT THÉÂTRE”

DIGITAL FILES AVAILABLE (on demand)

- 2D Plans DWG
- 3D Plans in 2025 Capture Format

TECHNICAL ACCESS TO THE “PETIT THÉÂTRE”

Access to the Petit Théâtre is via the inner courtyard of the Quartz (level -2) through the door near the freight lift of the main hall. The security control room may provide you with directions for the internal pathway to reach it.

FREIGHT LIFT

Access to the freight lift is at ground level (level -2) and descends to the stage of the Petit Théâtre at level -3, with a maximum load of 2000 kg.

Only the two sides of the lift can be used for support at a height of 1 meter. Equipment must be kept stable and at a distance from the two other sides (facing the two doors). Care should be taken not to overload in height while ascending in the lift, as this poses a risk of crushing.

Exterior access door to the building (level -2)	W: 2,10m	H: 2,03m
Interior access door to the building (level -2)	W: 1,75m	H: 2,05m
Access door to the freight lift (level -2)	W: 2,30m	H: 2,00m
Surface area of the freight lift for the Petit Théâtre	W: 2,20m	L: 2,33m

CAPACITY

Public access to the Petit Théâtre is at level -2.

The maximum capacity of the Petit Théâtre is 299 seats plus 6 accessible seats for people with reduced mobility (PMR).

The architectural configuration in an amphitheater mode may sometimes require the neutralization of seats on the sides for visibility reasons. It is important to inform the general manager as soon as possible in case of the need to neutralize any seats for this reason.

CONTROL ROOM LOCATION

A position at the back of the auditorium is reserved for the control rooms.

There is a "building" control room at the height of the walkway, offering a bird's-eye view of the stage.

The auditorium lighting : LED RGB.

DRESSING ROOMS

There are 4 dressing rooms with showers in the Petit Théâtre, located at level -2 (one floor above the stage, which is at level -3).

FLYING SYSTEM EQUIPMENT

All battens are motorized with fixed speed. Note that the motor speeds are not all the same.

- 15 motorized battens on stage.
- 2 fixed lateral battens (1 stage left and 1 stage right) under the catwalk.
- 1 upstage curtain on traveler track
- No front curtain.
- Grid above the front part of the stage.
- Catwalks around the perimeter, lateral catwalks, and 2 front catwalks.

DANCE FLOOR

- 1 set of Harlequin Duo Black/White, 1.5mm thickness.

STAGE DRAPES

The architectural specificities of the venue make traditional Italian masking difficult and less effective on the upstage half of the stage. For the upstage area, a fixed lateral travelling curtain allows for German-style masking.

	Width	Hight	Nombre
Borders	12,00m	0,50m	3
	12,00m	0,80m	3
	12,00m	1,00m	3 + 3
	12,00m	1,25m	3
	12,00m	1,50m	2
	12,00m	2,00m	1
	12,00m	3,00m	1
	16,00m	0,50m	1
	16,00m	0,80m	1
	16,00m	1,00m	1
	16,00m	1,25m	1
	16,00m	1,50m	1
	16,00m	2,00m	1
	16,00m	3,00m	1
	Legs	1,70m	6,20m
2,30m		6,00m	10
4,00m		6,00m	4
4,00m		3,20m	2
half of the back curtain	6,50m	6,00m	2
	5,00m	7,00m	4
Cyclorama			
White	10,50m	6,10m	1
Gray	10,50m	7,00m	1
Black Gauze	10,50m	7,00m	



LIGHTING

The Small Theatre is equipped with fixed dimmers: 60 cells of 3KW DIGI IV S.
The dedicated lighting console is a ION XE20 - EOS.

Lighting can be rigged on:

- 15 motorized battens.
- Exterior lateral catwalks (stage right and stage left).
- Catwalk 1: 7.60m above the stage, 7.40m from the front edge of the stage, with an angle of approximately 30°.
- Catwalk 2: 8.80m above the stage, 12.25m from the front edge of the stage, with an angle of approximately 45°. Note that this catwalk does not allow for full lighting coverage of the entire stage (shadow from Catwalk 1).
- Pipes under the lateral catwalks.

AUDIO / VIDEO

The installation of the sound control, as well as lighting and video, can be done either in the booth or at the top of the hall.

The equipment described below is dedicated to the Small Theatre:

- 4 MPB 600 2-inch speakers rigged on a specific sound batten (manual batten between E3 and E4).
- 2 MPB 1200 floor-standing speakers.
- 2 MPB 400 speakers rigged under the catwalk as fills for the upper seating area.
- Filtering: 1 XILICA XD 4080.
- Amplifiers: 3 LABGRUPPEN 3400.
- Freespeak II intercom system with 5 stations.
- Video monitor in the stage right wing.

Video projectors can be set up either in the booth, on the catwalk above the control booths, or on battens

LA MÉRIDIENNE

La Méridienne is primarily dedicated to conferences but can occasionally host performances.



CAPACITY

Public access to the Méridienne is on level +1.

The maximum capacity of La Méridienne is:

- 450 people standing
- 320 people seated

This capacity may vary depending on the configuration of the room.

FREIGHT LIFT

The access to the freight lift is at level -2, with a maximum load capacity of 2525 kg.

freight lift door: Width: 1.40m, Height: 2.09m



CONTROL ROOM POSITIONS

The position of the technical controls is variable depending on the hall configuration, either in a booth or in the house.

House lighting is dimmable by LED RGB.

DRESSING ROOMS

There are 2 dressing rooms without showers (can be used as translation rooms during conferences) located on the upper floor near the technical control rooms.

LIGHTING EQUIPMENT

The room lighting with LED RGB.

La Méridienne is equipped with dedicated dimmers

- 48 channels of 2 kW ETC Color Source
- Congo Junior lighting console

Lighting rigging is possible on

- 2 motorized bars
- Grid of tubes under the false ceiling, height: 5.70m

SOUND / VIDEO EQUIPMENT

La Méridienne does not have dedicated sound and video equipment.

REHEARSAL ROOM

The Rehearsal Room is on the same level as the Main Hall

CAPACITY

- Maximum audience capacity: 100 people.
- Maximum capacity for artistic and technical teams: 20 people.
- Public access is at level -1.

FREIGHT LIFT

- Same scenery lift of the main hall.
- The scenery lift is at level -2 and has a maximum load capacity of 5000 kg.

Exit door from the freight lift to the rehearsal room.	W : 1,62m	H : 2,04m
--	-----------	-----------

CONTROL ROOM POSITIONS

The control room positions vary depending on the room's configuration area.
The room lighting is dimmable and can be fitted with gels.

DESSING ROOM

1 dressing room without shower.

FLY SYSTEM EQUIPMENT

A truss bridge on motors with crossbars in tubes on clamps is permanently installed.
Two bracket-mounted rigging points around the perimeter of the room at 4.40m and 6.70m.
Black painted floor of 225m², with one wall featuring a concealable mirror.

DANCE FLOOR

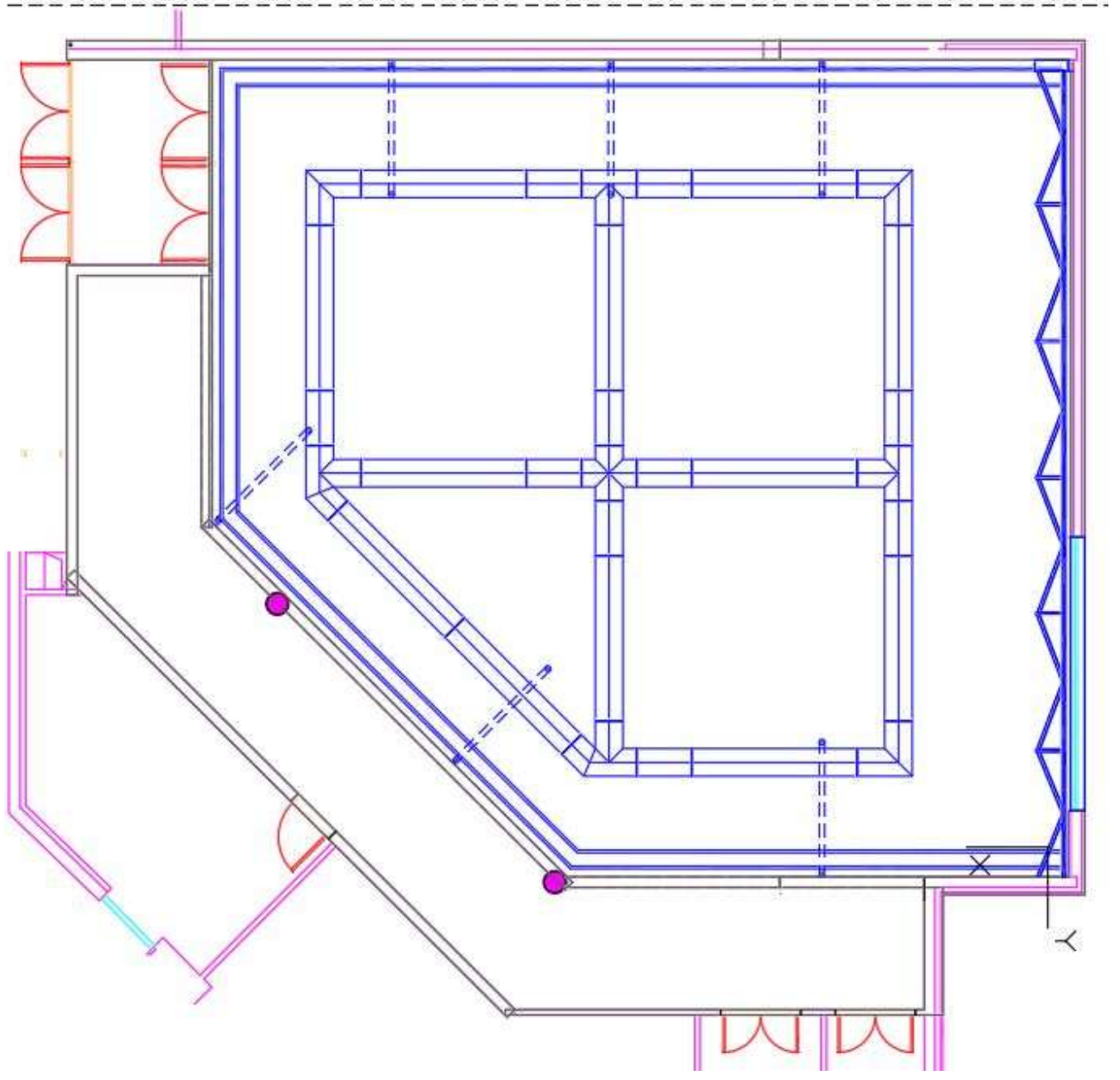
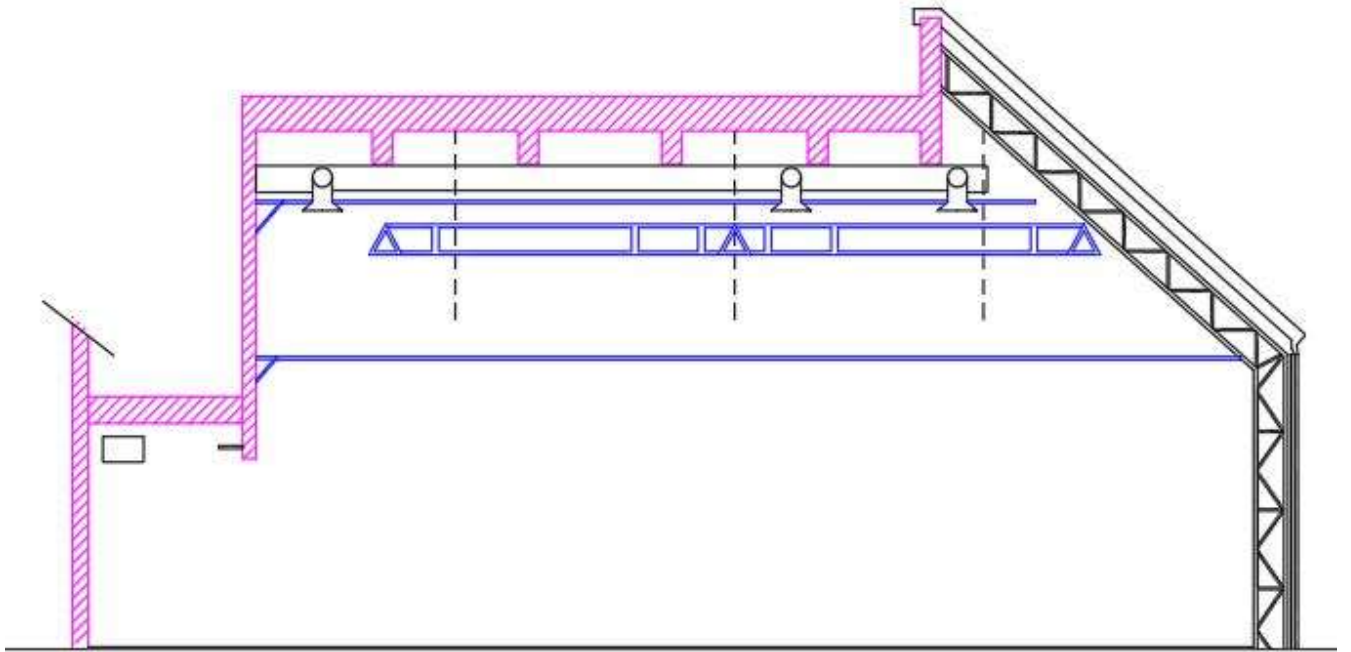
Le Quartz can provide a set of Harlequin Duo Black/White dance flooring, 1.5mm thick.

LIGHTING EQUIPMENT

There is no specific lighting equipment, only a permanent service lighting installed on the mobile truss.

SOUND / VIDEO EQUIPMENT

The Rehearsal Room does not have dedicated sound or video equipment.



DANCE STUDIO

CAPACITY

- Public access to the Dance Studio is on level +2.
- Maximum audience capacity: 100 people
- Maximum for artistic and technical teams: 20 people
- A small fixed wooden tier with cushions is available.

FREIGHT LIFT

There is no dedicated set lift for accessing the Dance Studio. Only a lift is available. Access is also possible via the Cour service lift, followed by one flight of stairs.

Lift door to Dance Studio	l: 0,80m	Ht: 2,00m
Lift surface	l: 1,00m	Ht: 1,40m

CONTROL ROOM POSITION

The control rooms are located behind the fixed seating area. The room lighting is dimmable and can be fitted with color gels.

DRESSING ROOMS

No dressing rooms are available.

STAGE / FLY SYSTEM EQUIPMENT

Elevated, black-painted floor of 225 m², opening of 12 m by 10 m deep.
A triangulated bridge suspended on an electric hoist above the seating.
Tube grids fixed to I-beams above the stage.
Height under fixed grid: 5.25 m.

DANCE FLOOR:

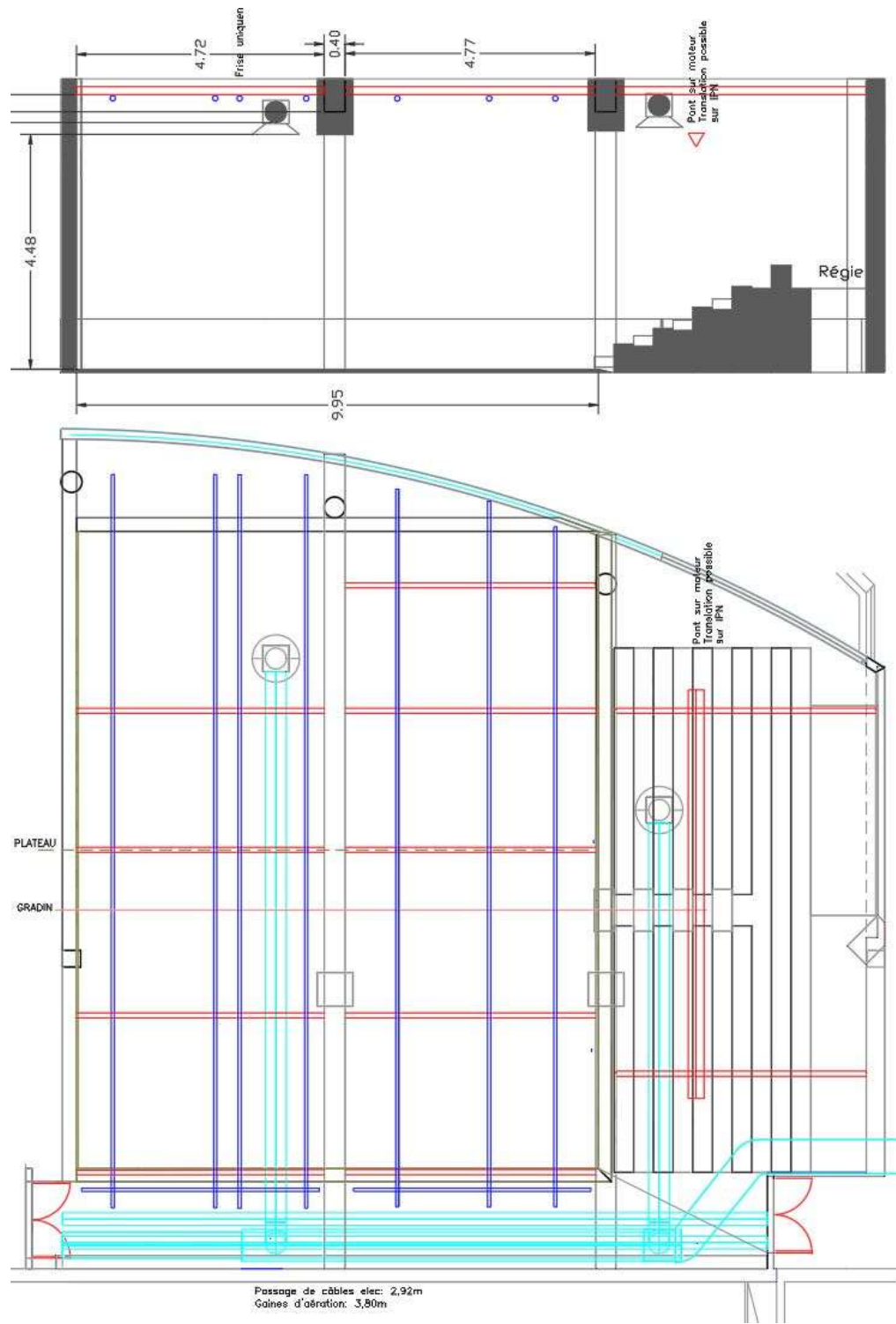
Le Quartz can provide a set of Harlequin Duo Black/White dance flooring, 1.5mm thick.

LIGHTING EQUIPMENT

There is no specific lighting equipment, only a permanent service lighting installed on the mobile truss.

SOUND / VIDEO EQUIPMENT

The Rehearsal Room does not have dedicated sound or video equipment.



EQUIPMENTS

STAGE

MOTORS

1T	VERLINDE	4
	LIFTKET / HOFFMANN/MB4.3/20T	6
1T manuel	TRACTEL/TRALIFT	2
500kg	VERLINDE / SM 504 M1/A20	5
	DONATI / 214C	2
250kg	CM-Prosta	12
	VERLINDE	1
	DONATI / 134C	5
250kg manuel	LEVEX / SPM 12A11PC	4

RISERS

SCISSOR 2m x 1m	29
PLATFORM WITH STANDS 2m X 1m	21
PLATFORM WITH STANDS 1m X 1m	4
HEIGHTS 20, 40, 60, 80, 100 cm	

WORKSHOP

WOOD	Mini Max CU 300 Smart Combination Machine	1
	Putsch-Meniconi SVP 133 Pannel saw	1

STEEL/ALUMINIUM	Mac Special 280 Ruban saw	1
	Semi-automatic welding station for steel/aluminum:	1
	Oerlikon Citoline 3500TS et DV4004CTL	1
	Pro-Tecnic column drill	1

Please note, the use of this equipment is exclusively reserved for Le Quartz technicians.

COSTUME SHOP

Washing machine	2
Steam station	2
Flat sewing machine	3
Leather sewing machine	1
Serger (overlock machine)	1
Heated cabinet	1
Spin dryer	1
Tumble dryer	1
Coverstitch machine	1
Ironing table	2

LIGHTING

Lightning console		1	Grand Ma2 light
Profile spots	1000W	8	611SX - R.Juliat 8/16°
		18	613SX - R.JuLiAt 28/54°
		30	614S - R.JuLiAt 13/42°
		22	614SX - R.Juliat 15/40°
	2000W	10	713SX - R.Juliat 29/50°
		28	714SX - R.Juliat 15/40°
2500W MSR	2	933SX - R.Juliat 29/50°	
Convex plan spots	1000W	60	310HPC - R.Juliat 12/63°
Pebble	2000W	45	329HPB - R.Juliat 9/68°
FRESNEL	2500W MSR	2	LTM avec jalousie/shutter
	5000W	2	5KW SH50-LTM volets 12/51°-Barndoors ADB

PARS	100	PAR 64 – sénilux (CP 60/61/62)
	20	PAR 36 (F1) - DTS
	10	PAR 16 - DTS

Asymmetrical cycloids	36	ACP 1001 - ADB 1000W/1200W
-----------------------	----	----------------------------

Follow spots	2	HMI 1800W VICTOR - R.Juliat
--------------	---	-----------------------------

Special effects	1	ATMOSPHERE - MDG
	2	UNIQUE 2,1 - Look
	1	CAPTAIN D - Smoke Factory
Controlled	16	A8 - JB Lighting
	10	QUANTUM PROFILE - MARTIN
	14	RUSH ZOOM 2 - Martin
	2	ATOMIC 3000 - Martin
Various	6	BLINDER 4 X 250W
Accessories	12	BOOMS H2m
	8	ALT 300 - ASD
	2	ALT 400 - ASD
	6	PIEDS H150/250cm
	4	PIEDS H100/150cm

SOUND / VIDEO

DESKS	1	SSL L500+
	1	Yamaha RIVAGE PM3
	3	Yamaha QL1
	1	Yamaha DM3

PERIPHERALS	1	Reverb Bricasti M7
	1	Reverb Lexicon PCM 90
	1	Reverb TC M2000
	1	TL Audio C -1

WIRELESS	2	Rack de 4 EW 500G4 avec SKM 500 G4 et splitteur ASA 214
	8	EW 100G3 avec SKM 100G3 835
	2	EW 300G3 avec SKM 300G3 et SKP 300 G3
	1	EW 550G2 avec SKM 500G2 et SK 500G2
	4	EM 6000 avec 8 SKM 6000,6 ME 9005, 2 KK 204, 8 SK 6012.

SPEAKERS	6	Amadeus MPB600 2 pouce
	4	Amadeus MPB600 1 pouce
	4	Amadeus MPB1200
	16	Amadeus PMX15
	8	Amadeus MPB200R
	2	Nexo LS500
	2	SUB MEC
	1	RONDSOON EXPERT
	1	ACE AUDIO GRIZZLY
	2	LD systems Curve 500
	2	LD Systems Road Buddy 10

INTERCOM	2	Systèmes HF DX 200 HME 4 postes
----------	---	---------------------------------

Mics	6	Audiotechnica ATM 350
	2	Audiotechnica ATM 87R
	2	Audix D2
	1	Audix D4
	1	Audix D6
	2	Audix SCX 25 A
	1	Audix SCX 1 HC
	1	Audix I5
	2	Audix OM7
	2	AKG C414 B XLS
	2	AKG C480
	1	AKG C535
	1	AKG D112
	2	AKG D190
	2	Beyer Dynamic M88
	1	C. Ducer CP Stéréo
	1	DPA 2011
	10	DPA 4099 Hi s
	1	EV RE20
	4	EV ND468
	1	MBHO MBD219
	16	Neumann KM 184
	1	Neumann KMS105
	2	Rode NTG3B (shotgun)
	2	Sennheiser E835
	2	Sennheiser E835 S
	2	Sennheiser E855
	2	Sennheiser MD 421
	4	Sennheiser E 604
	2	Sennheiser E608
	2	Sennheiser E609
	1	Shadow SH2000
	6	Shure SM57
	15	Shure SM58
	6	Shure SM81
	1	Shure B52
	1	Shure B56
	2	Shure B57
	2	Shure B58
	2	Shure B87
	1	Shure B 91 A
	2	Shure B98
	9	Shure SM98

VIDEO	2	Projectors CHRISTIE HD 14K-M
	1	Lens Christie 0,67:1 HD ILS
	1	Lens Christie 1.8-2.6:1 HD ILS
	2	Lens Christie 2.6-4.1:1 HD ILS
	2	Lens Christie 4.1-6.9:1 HD ILS
	1	Projectors PANASONIC PT-REQ15BEJ
	1	Lens PANASONIC ET-CT800
	1	Lens PANASONIC ET-CS600
	1	Roland VR-50HD
	1	Roland VR-50HD MK2
	4	Wahlberg Shutters DMX HS 422

COMPUTERS	2	MacBook Pro 15 pouces (QLAB)
	1	IMAC 27 pouces 2021 (Protocols, FinalCut)
	1	RME Fireface 400
	2	RME Fireface 802
	1	Madiface